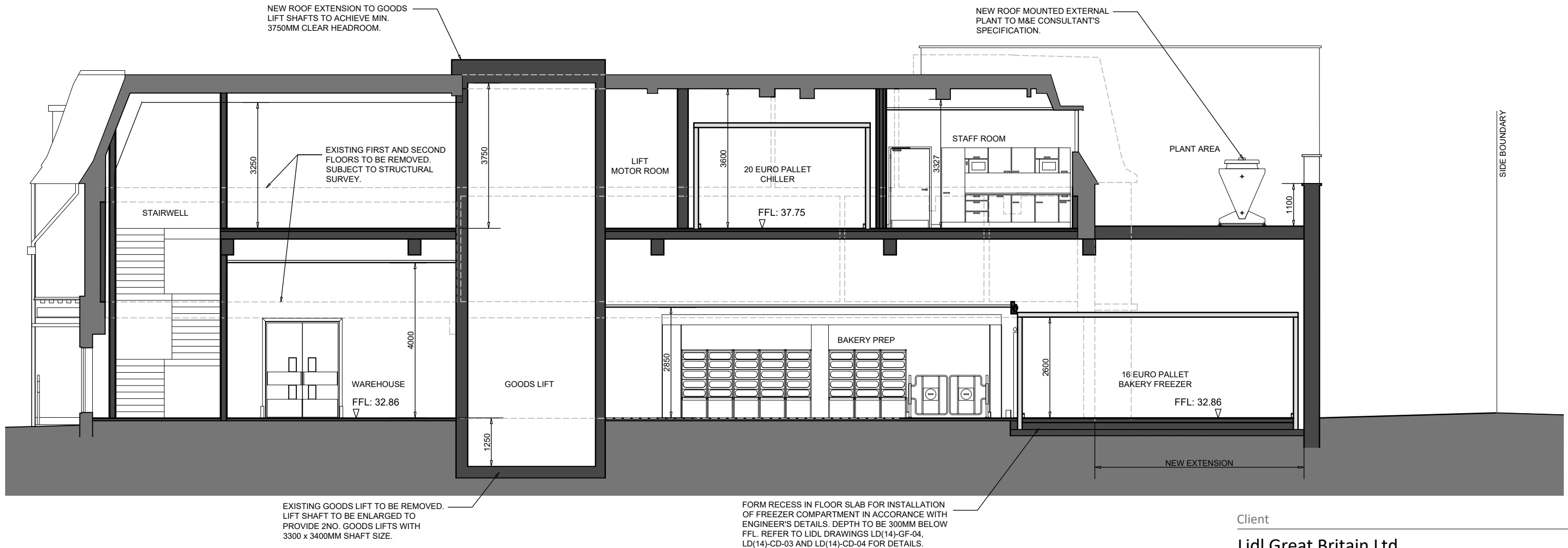


Rev	Date	Reference	Drawn / Chk'd
P03	2021/02/12	SECTION KEY REVISED.	AA AA



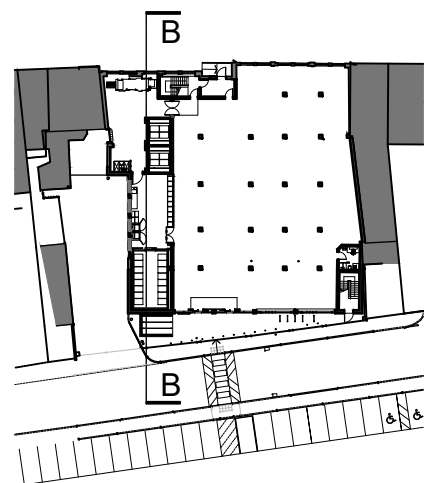
Client
Lidl Great Britain Ltd

Project
Lidl
14-20 Chapel Street, Marlow

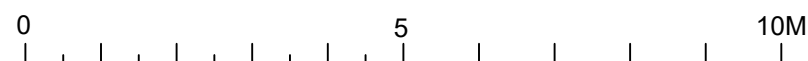
Title
Section B-B as Proposed

Drawing Ref. Revision
5080-0503 P03

Scale - unless otherwise stated Status Issued For
1:100 @ A3 S0 Preliminary



SECTION KEY



KLH architects
The Old Steelyard, Poplar Lane
Sproughton, Ipswich, IP8 3HL
t.01473 689532
klh@klharchitects.com
www.klharchitects.com