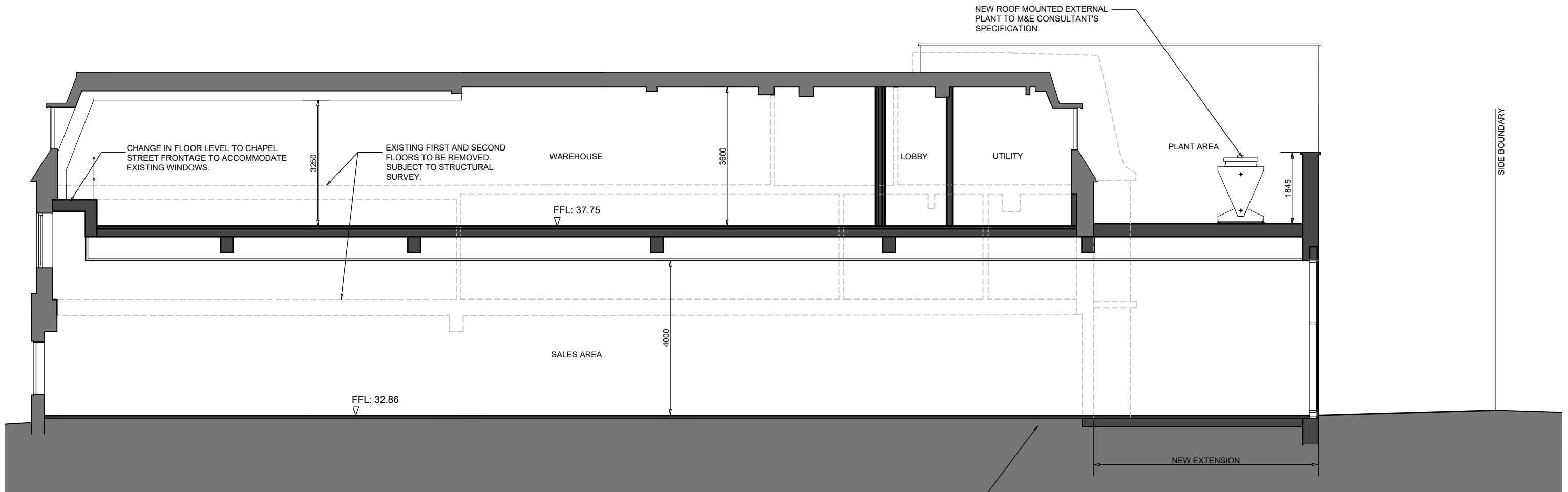


Rev	Date	Reference	Drawn / Chk'd
P03	2021/02/12	SECTION KEY REVISED.	AA AA



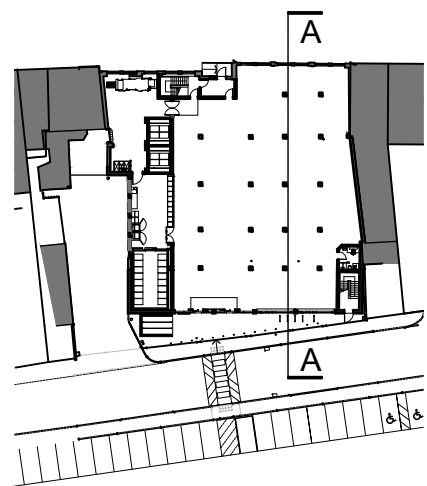
FORM RECESS IN FLOOR SLAB FOR INSTALLATION OF FREEZER COMPARTMENT IN ACCORDANCE WITH ENGINEER'S DETAILS. DEPTH TO BE 300MM BELOW FFL. REFER TO LIDL DRAWINGS LD(14)-GF-04, LD(14)-CD-03 AND LD(14)-CD-04 FOR DETAILS.

Client  
Lidl Great Britain Ltd

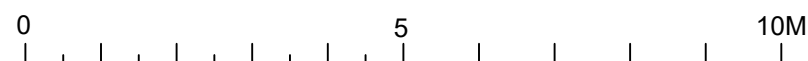
Project  
Lidl  
14-20 Chapel Street, Marlow

Title  
Section A-A as Proposed

Drawing Ref.	Revision
5080-0500	P03
Scale - unless otherwise stated 1:100 @ A3	Status S0
	Issued For Preliminary



SECTION KEY



**KLH** architects  
The Old Steelyard, Poplar Lane  
Sproughton, Ipswich, IP8 3HL  
t.01473 689532  
klh@klharchitects.com  
www.klharchitects.com